

IMS Policy Statement (Scope) Process Interaction

Sanderson Watts Associates maintain an Integrated Management System (IMS) that meets the full requirements of ISO 9001:2015, ISO 14001:2015, ISO 45001:2018, ISO 19650:2018.

The IMS relates to all activities carried out in the Company and/or any external activities over which the Company controls or influences, providing clear guidance to all staff, including Directors, Senior Management, Technical and Administration Personnel and relevant External Providers, for the implementation of the Quality, Environmental and Health and Safety Integrated Management System in the performance of their duties.

The scope of is as follows:-

“Provision of Structural and Civil Engineering Consultancy Services, including associated project management activities within the public and private sectors. All services are undertaken within the UK.”

The IMS is documented on four levels: -

LEVEL 1 THE IMS POLICIES (IMP's)

These outline the policies and principles applied by the Company in the operation of the IMS.

LEVEL 2 MANAGEMENT PROCEDURES (MP's)

The IMS Management Procedures (MP's) prescribe procedural and process controls relating to the specific key activities, including quality, environmental and health & safety controls within the Company.

An outline of the Management Procedures is defined in the process interaction diagram below (Overleaf).

LEVEL 3 OPERATING PROCEDURES (OP's)

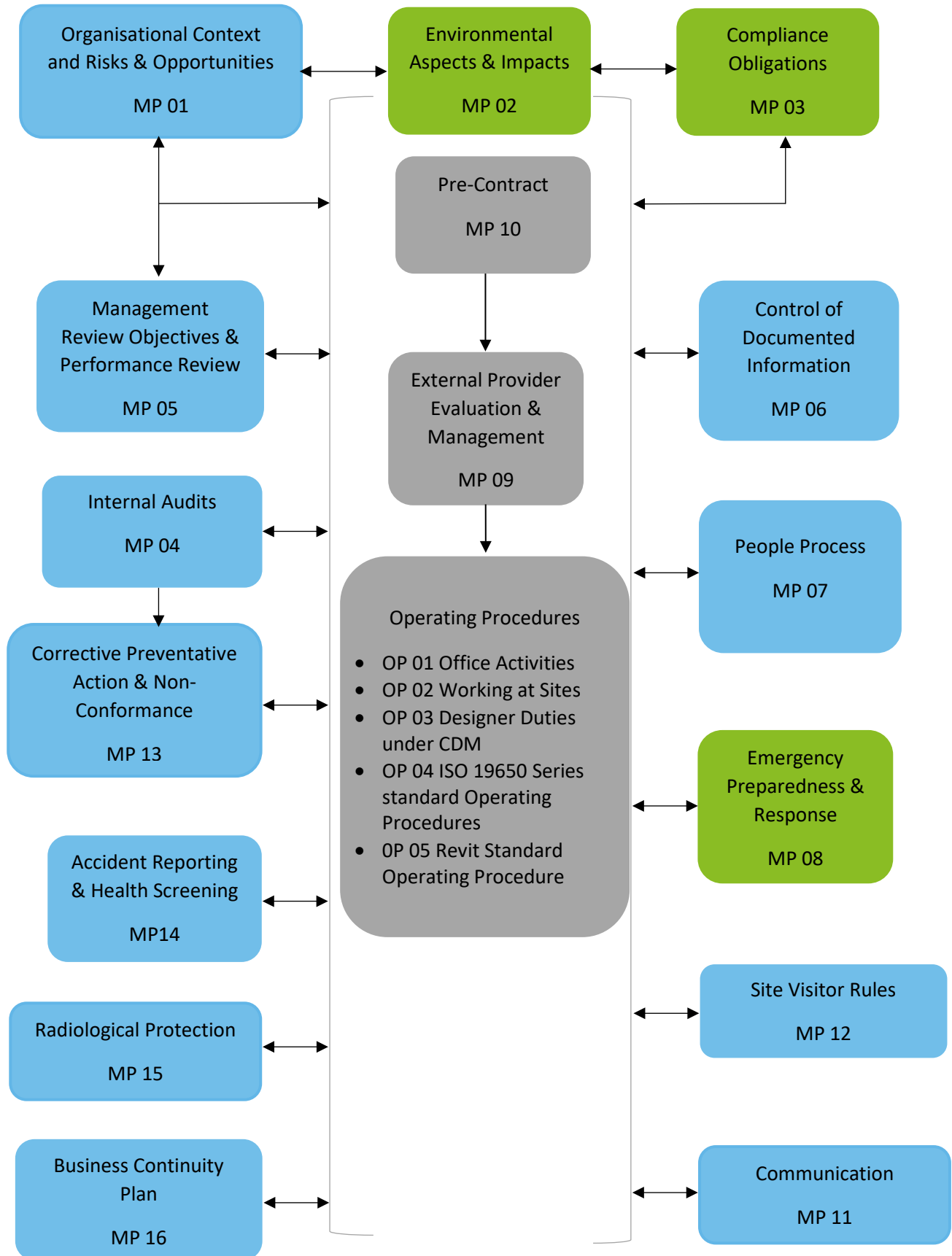
The IMS Operating Procedures (OP's) are a third tier level of detailed instruction, which describe in detail, methods of working (overleaf).

LEVEL 4 FORMS (MF's)

The IMS forms (MF's) are complimentary to the procedures and process controls and provide templates for completion by personnel to provide a record and to verify activity completion.

IMP 04

IMS Policy Statement (Scope) Process Interaction



IMS Policy Statement (Scope) Process Interaction

